

Data Acquisition System for Synchronous Generator Transient Performance

Presented by
PREW Generation



Agenda

1- Project Specification.

- i. Data Acquisition Device Specification

- ii. Measurement Specification

2-Methodology.

3- Current and Voltage LEMs.



PXI 6251

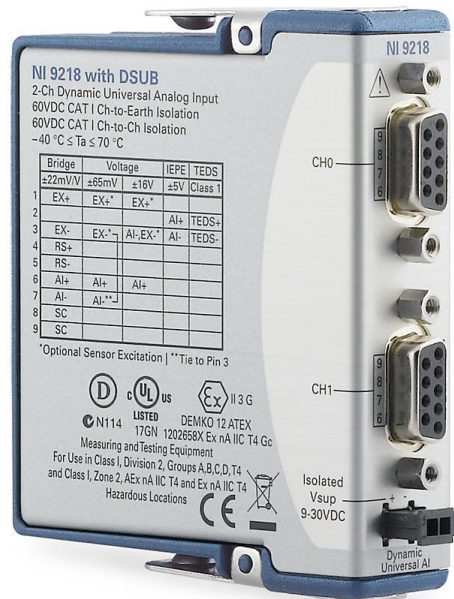


USB 6356

- DI/DO:24
- AI:8
- Sample rate:1.25MS/s
- Max V:+11V/-11V



NI USB 9218



Problem

- Measuring Current (AC or DC)

Solution

- Using Shunt Resistor

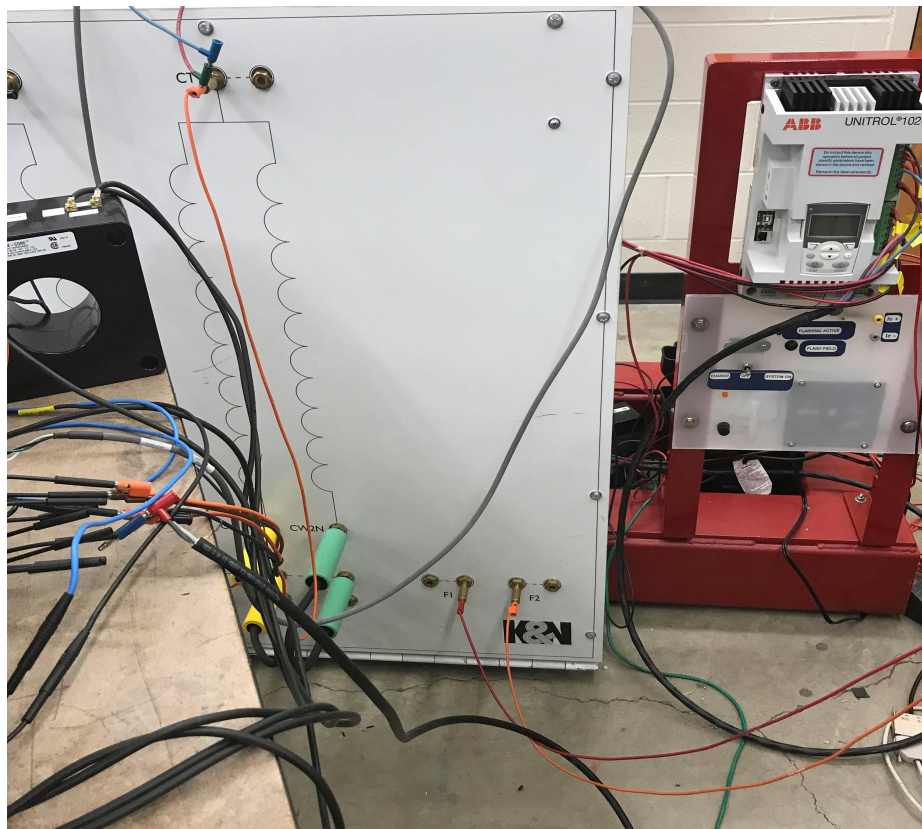


Measurement Specification

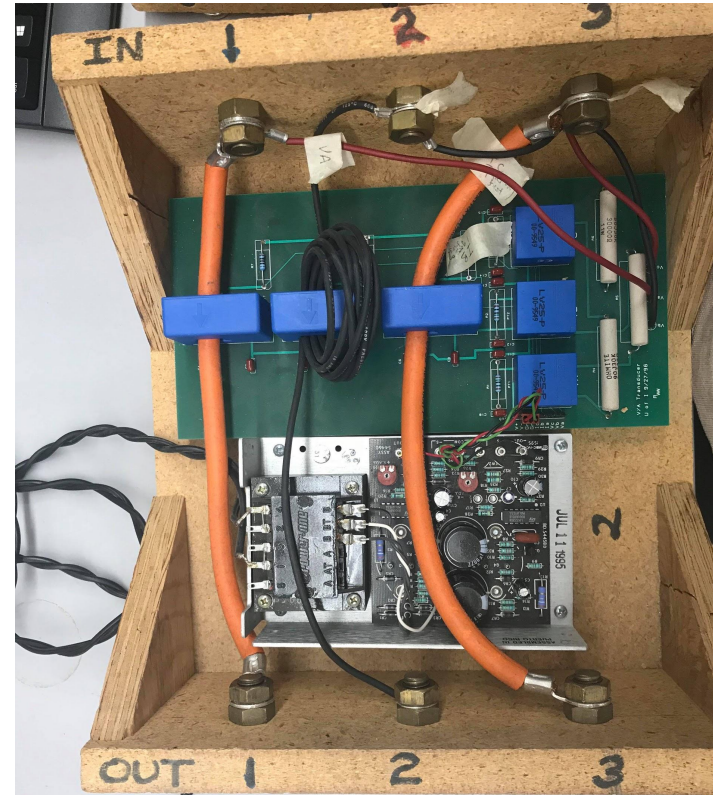
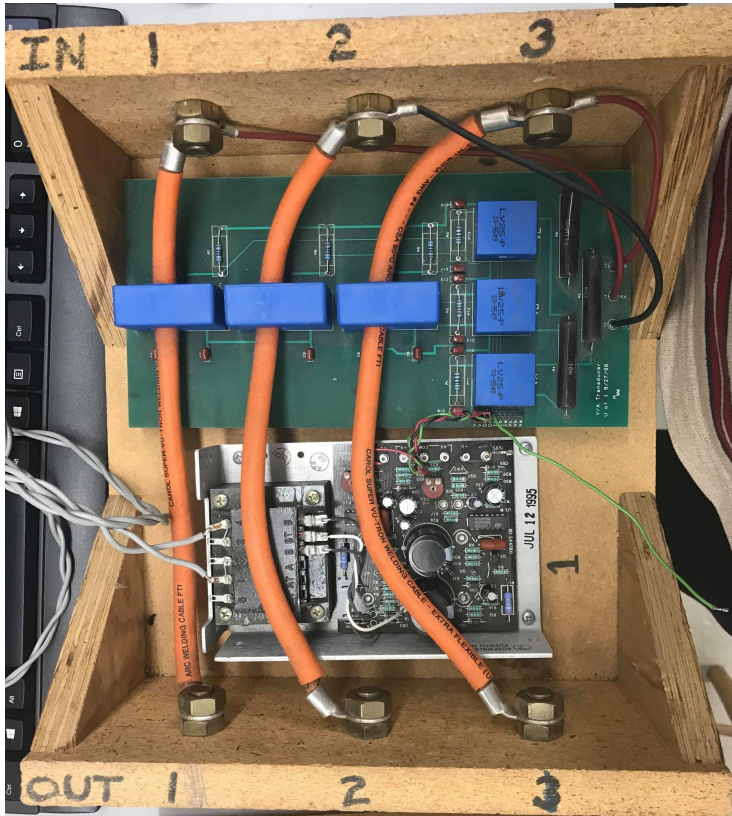
1. L-L Voltage or L-N
 - a. Generator neutral
2. Maximum Voltage & Current (AC/DC)
3. Measuring V_a , V_{ab} , or $V_a V_b V_c$ (AMPS)
4. Measuring Field current/ voltage (next slide)



Field I/V



Current/Voltage LEMs



Next Step..



Thank you

Any Comments?

